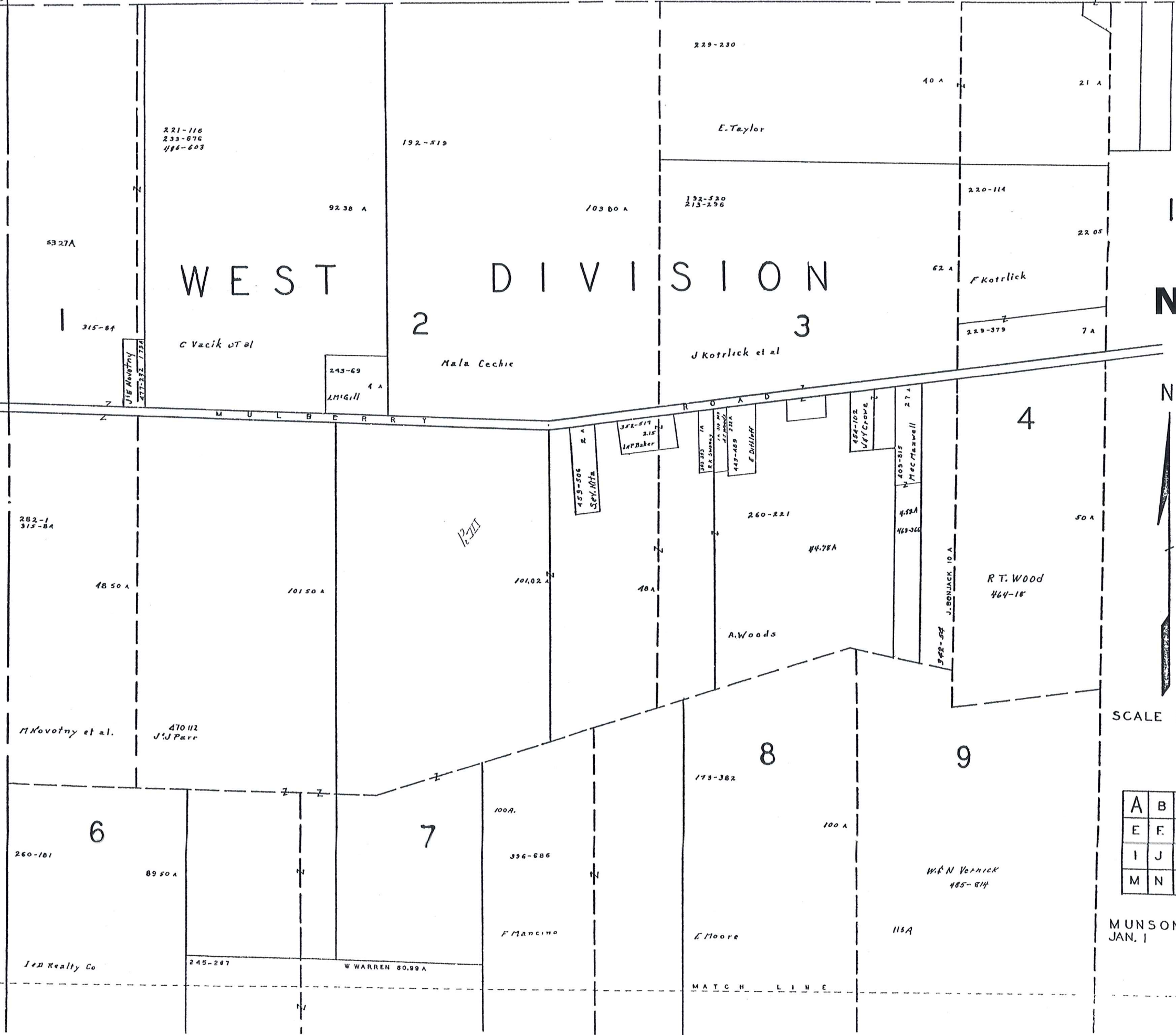


LAKE CO

CHARDON TOWNSHIP

TOWNSHIP

CHESTER



WEST DIVISION

10 MUNSON TWP - A NOT TO SCALE 1968

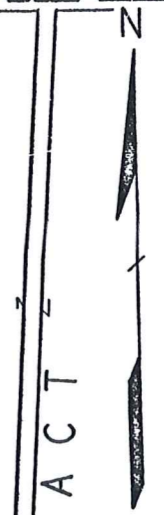
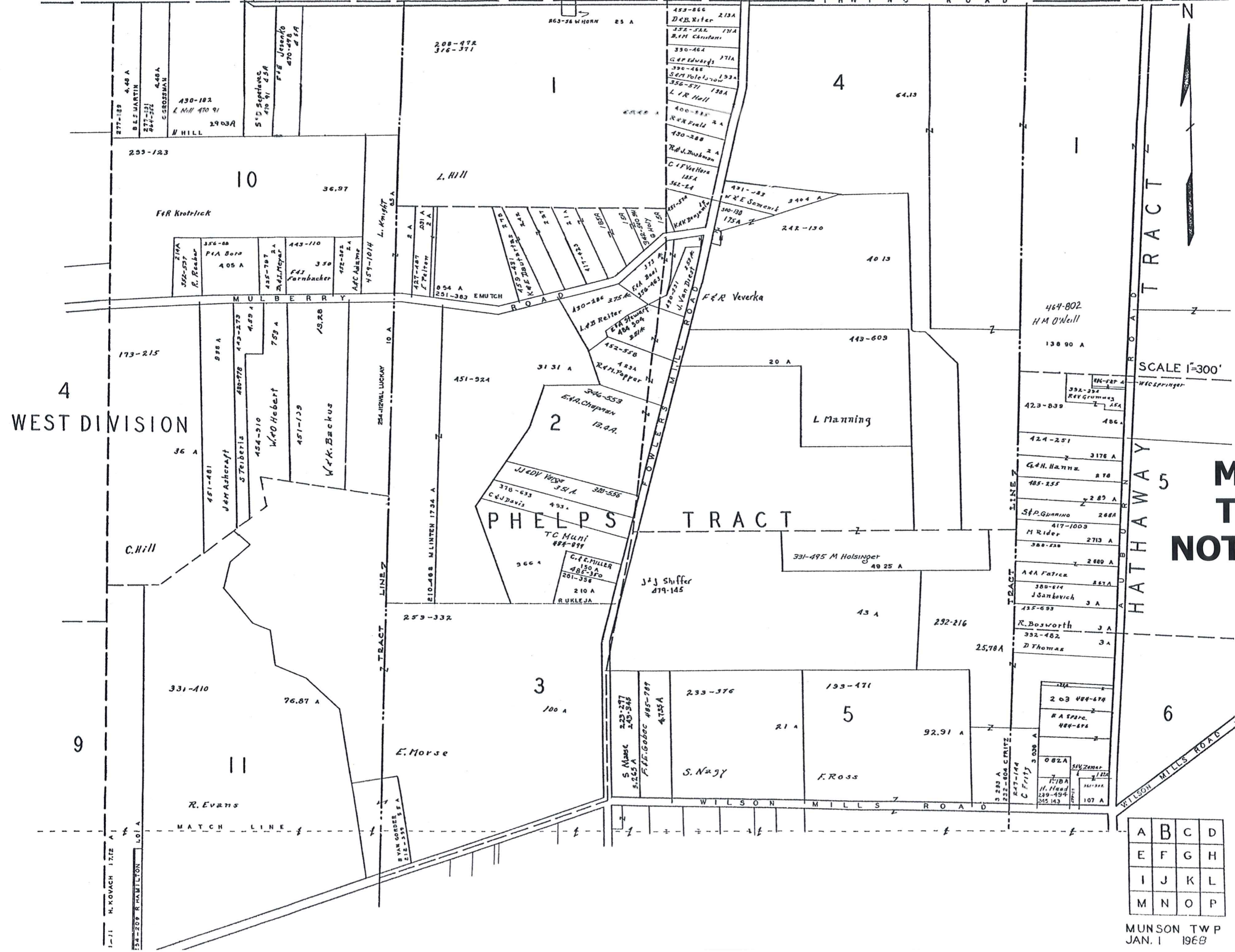


SCALE 1" = 300'

A	B	C	D
E	F	G	H
I	J	K	L
M	N	O	P

MUNSON TWP. JAN. 1 1968

C H A R D O N T O W N S H I P



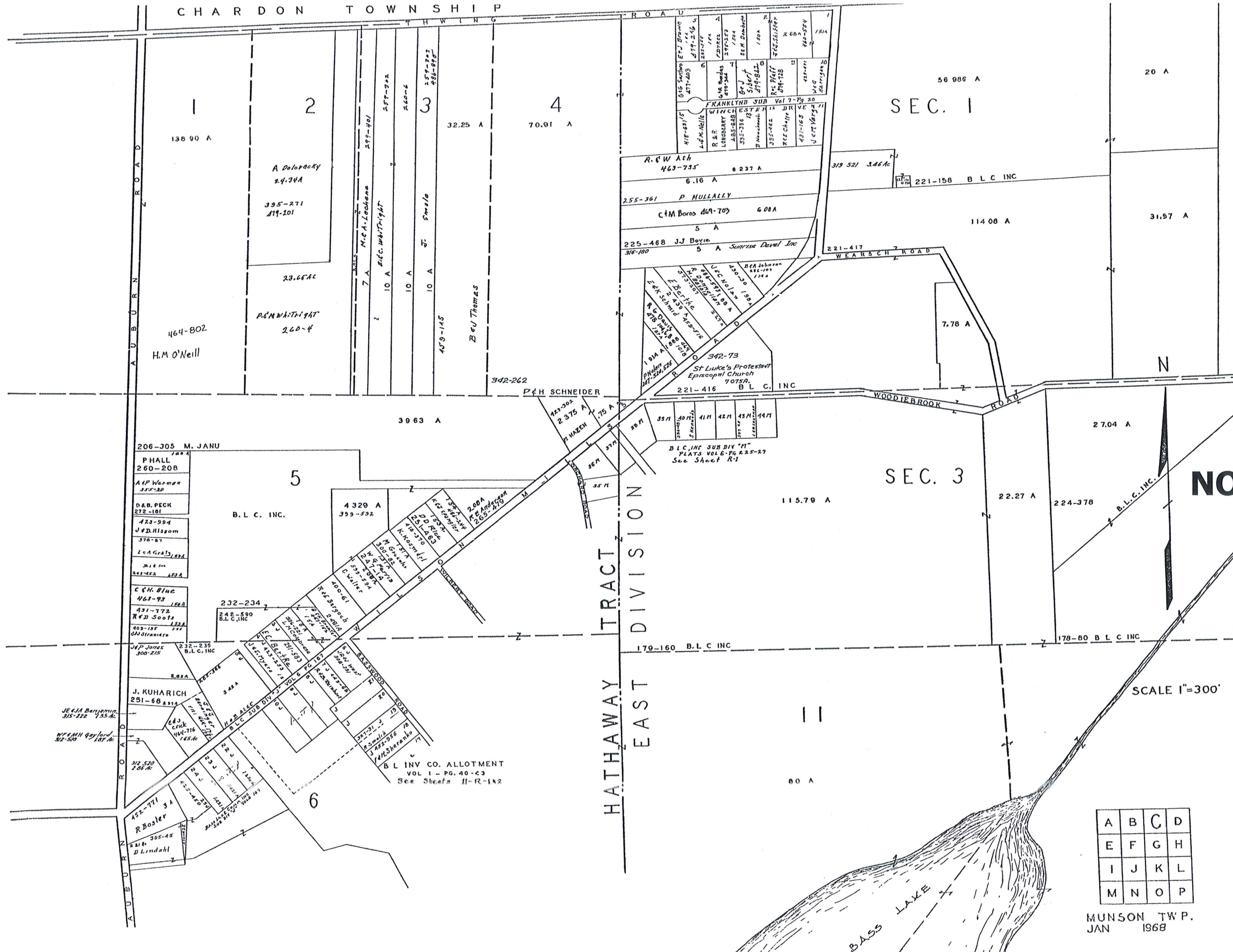
SCALE 1"=300'

**MUNSON  
TWP - B  
NOT TO SCALE  
1968**

A	B	C	D
E	F	G	H
I	J	K	L
M	N	O	P

MUNSON TWP  
JAN. 1 1968

CHARDON TOWNSHIP



**MUNSON  
TWP - C  
NOT TO SCALE  
1968**

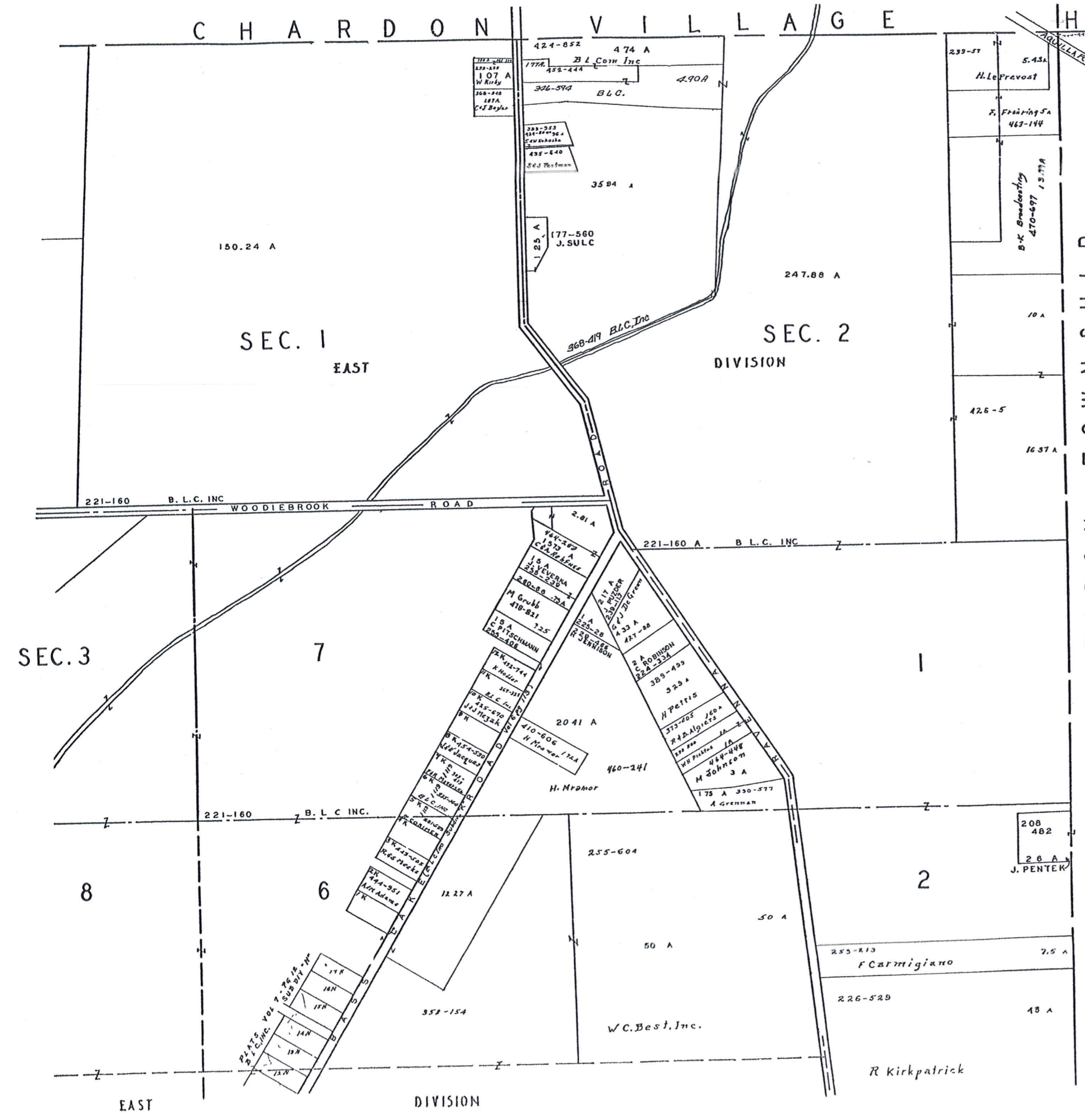
SCALE 1"=300'

A	B	C	D
E	F	G	H
I	J	K	L
M	N	O	P

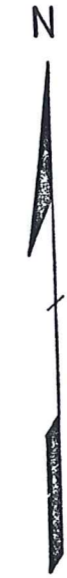
MUNSON TWP.  
JAN 1968

CHARLTON VILLAGES HAMB DEN TWP.

**MUNSON  
TWP - D  
NOT TO SCALE  
1968**



CLARIDON TOWNSHIP

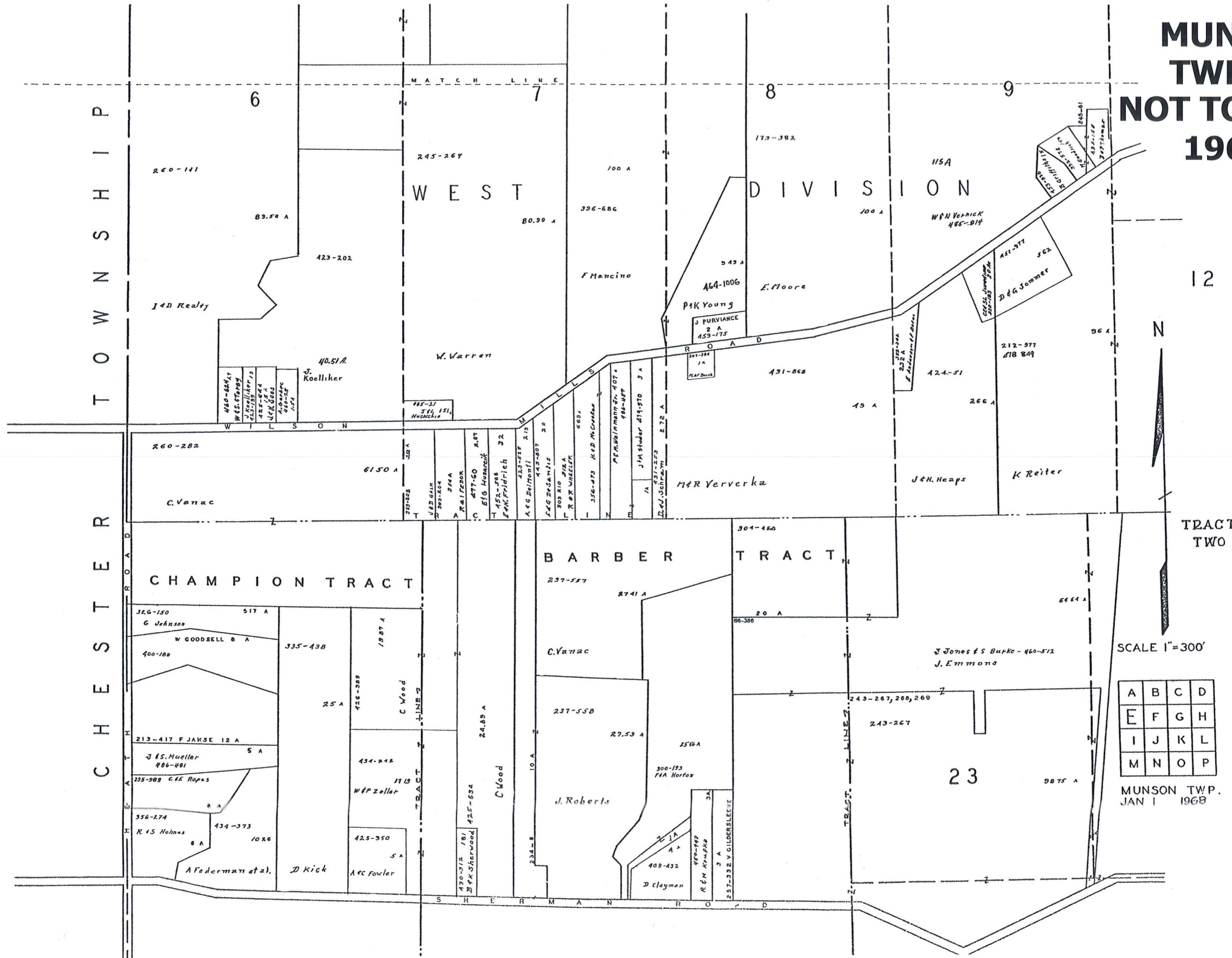


SCALE 1" = 300'

A	B	C	D
E	F	G	H
I	J	K	L
M	N	O	P

MUNSON TWP.  
JAN. 1 1968

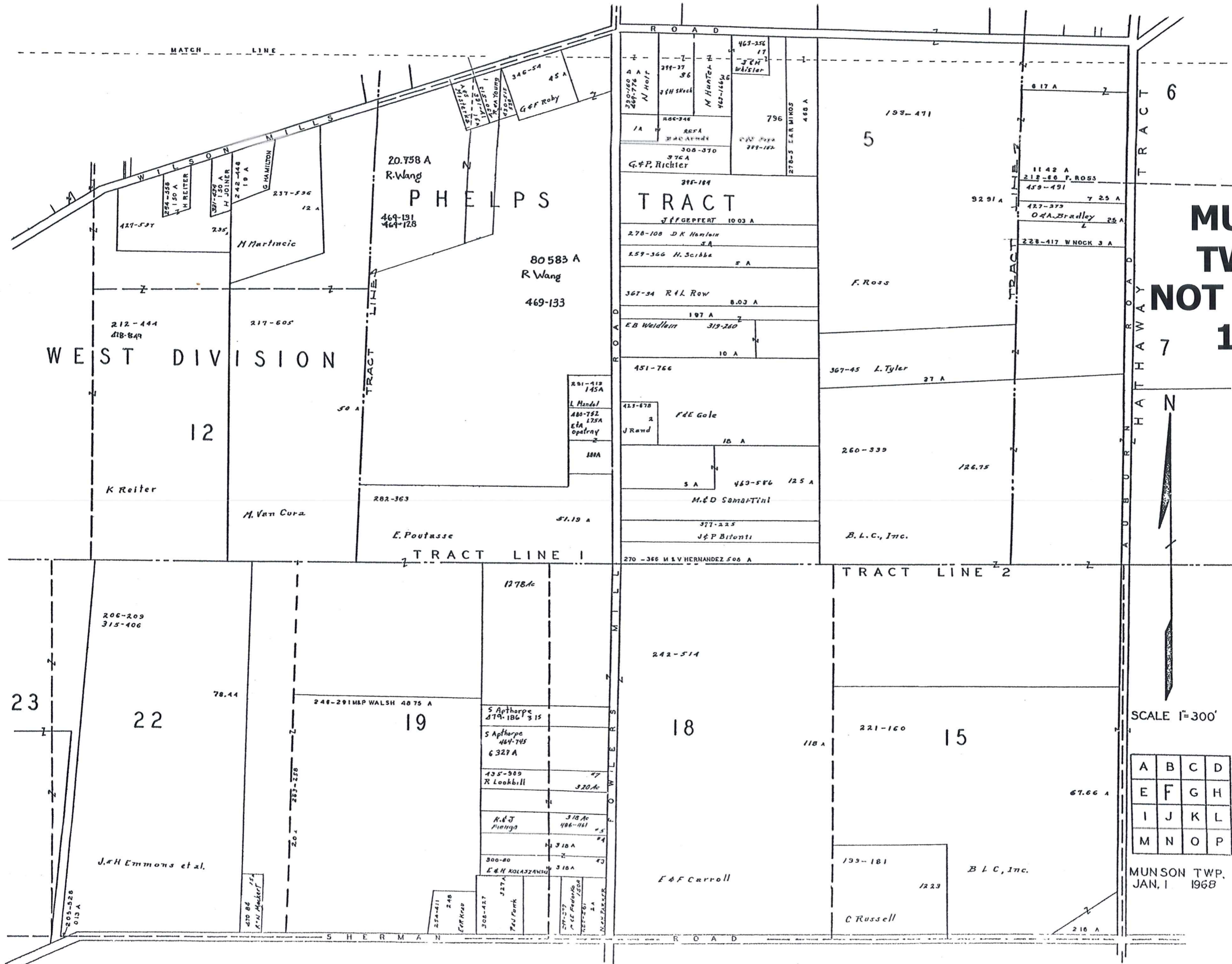
# MUNSON TWP - E NOT TO SCALE 1968



SCALE 1"=300'

A	B	C	D
E	F	G	H
I	J	K	L
M	N	O	P

MUNSON TWP.  
JAN 1 1968



# MUNSON TWP - F NOT TO SCALE 1968

SCALE 1"=300'

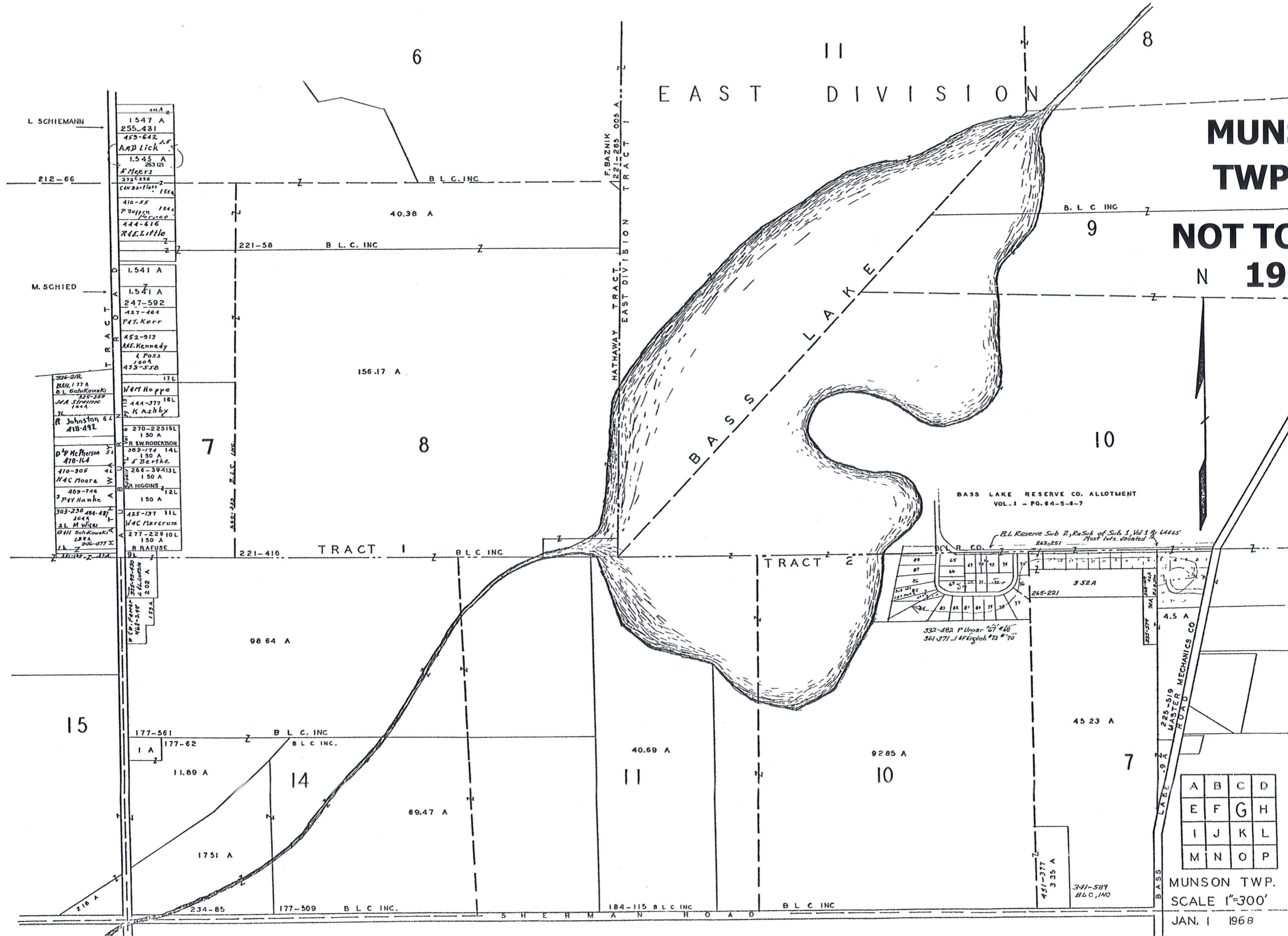
A	B	C	D
E	F	G	H
I	J	K	L
M	N	O	P

MUNSON TWP.  
JAN, 1 1968

EAST DIVISION

MUNSON TWP - G

NOT TO SCALE 1968



Vertical list of land parcels and owners:

- L. SCHIEMANN
- 1547 A
- 255-431
- 453-642
- A. D. Lick
- 1545 A
- 283-121
- F. Meyer
- 272-236
- C. Bartlett
- 155A
- 110-55
- P. Duffin
- 184A
- 144-616
- R. E. Little
- 1541 A
- 1541 A
- 247-592
- 127-461
- P. T. Kerr
- 452-913
- M. E. Kennedy
- 100A
- 453-558
- 17L
- W. H. Hoppe
- 144-377
- 16L
- S. K. Ashby
- 270-22516L
- 150 A
- R. S. ROBERTSON
- 209-174
- 14L
- 150 A
- L. F. Becke
- 266-39413L
- 150 A
- DR HIGGINS
- 12L
- 150 A
- 425-137
- 11L
- W. C. Marcum
- 277-22910L
- 150 A
- R. RAUFUSE
- 221-416
- TRACT 1
- B. L. C. INC.
- TRACT 2
- B. L. C. INC.
- 98.64 A
- 177-561
- B. L. C. INC.
- 177-62
- B. L. C. INC.
- 11.89 A
- 14
- 69.47 A
- 1751 A
- 234-85
- 177-509
- B. L. C. INC.
- 40.69 A
- 11
- 92.85 A
- 10
- 45.23 A
- 7
- 451-377
- 3.35 A
- 341-589
- B. L. C. INC.
- 225-519
- MASTER MECHANICS CO
- ROAD
- 4.5 A
- 352A
- 265-221
- 332-482 P. Duffin 271 # 65
- 361-371 J. A. Fingler # 73 # 70
- B. L. Reserve Sub 2, Re Sub of Sub 1, Vol 1 & 4465
- 263-251
- Most lots located
- B. L. C. CO.
- 332-482 P. Duffin 271 # 65
- 361-371 J. A. Fingler # 73 # 70
- 332-482 P. Duffin 271 # 65
- 361-371 J. A. Fingler # 73 # 70

A	B	C	D
E	F	G	H
I	J	K	L
M	N	O	P

MUNSON TWP.  
SCALE 1"=300'  
JAN. 1 1968

1 J. Nealey 225-85  
 2 Security Fed. 453-508 53  
 3 K & A Landman 423-15

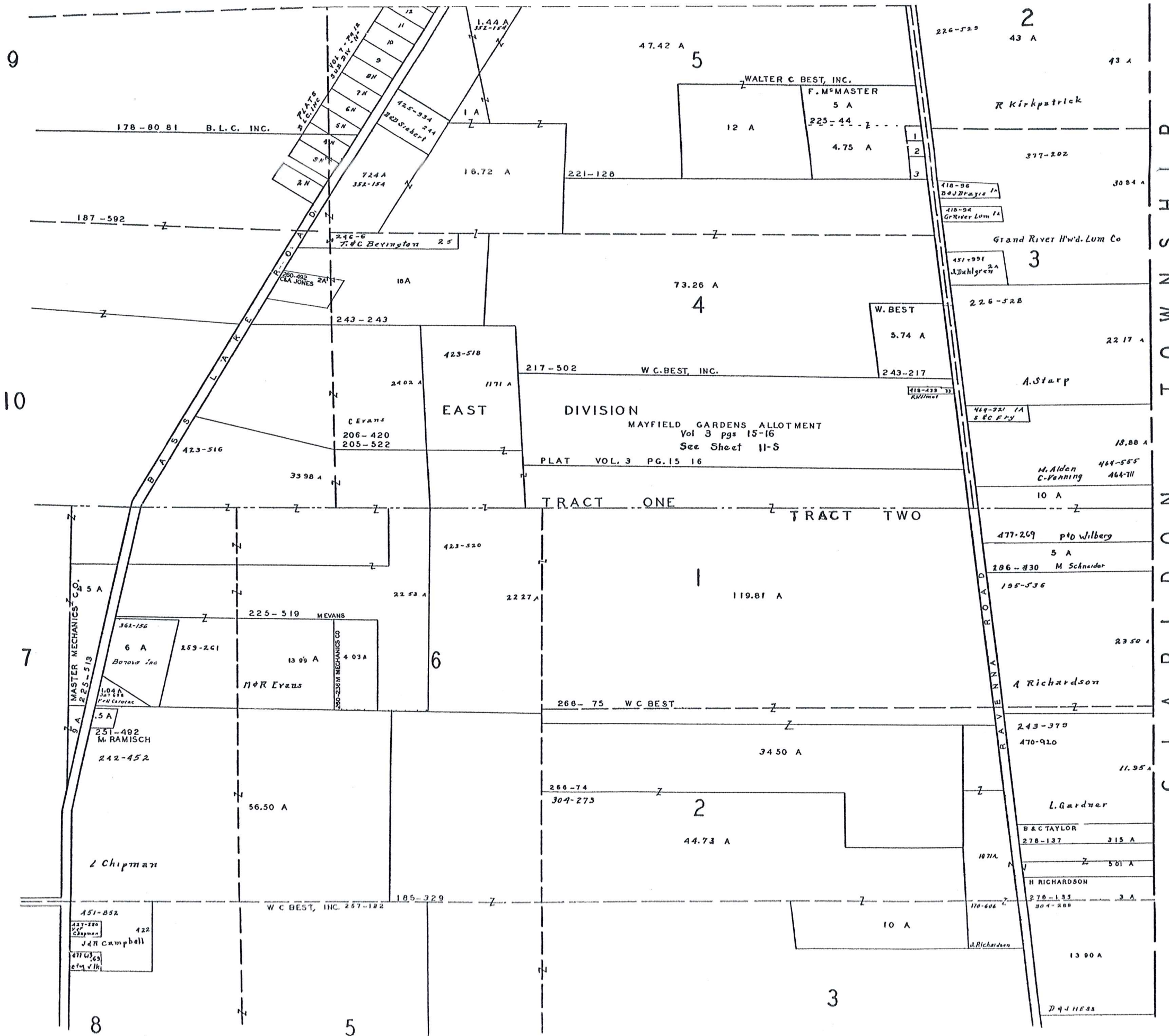
# MUNSON TWP - H NOT TO SCALE 1968



SCALE 1"=300'

A	B	C	D
E	F	G	H
I	J	K	L
M	N	O	P

MUNSON TWP.  
JAN 1968



9

10

7

8

5

3

2

6

4

5

2

43 A

3

1

5 A

206-830

195-536

2350 A

A Richardson

243-370

470-920

11.95 A

L. Gardner

B & C TAYLOR

278-137

315 A

501 A

H RICHARDSON

278-133

304-280

3 A

10 A

1071A

110-606

10 A

J. Richardson

226-528

5.74 A

W. BEST

243-217

2217 A

A. Stupp

418-433

226-528

3084 A

Grand River Hwd. Lum Co

451-991

2 A

418-96

1 A

418-94

Grand River Lum 1A

377-202

43 A

R Kirkpatrick

225-44

4.75 A

F. M. MASTER

5 A

12 A

WALTER C. BEST, INC.

47.42 A

1.44 A

352-154

724A

352-154

16.72 A

241-6

7. C. BEVINGTON

25

243-243

16A

200-492

2A

246-6

243-243

16A

246-6

7. C. BEVINGTON

25

243-243

16A

246-6

7. C. BEVINGTON

25

243-243

16A

246-6

7. C. BEVINGTON

25

243-243

16A

246-6

7. C. BEVINGTON

25

243-243

16A

246-6

7. C. BEVINGTON

25

243-243

16A

246-6

7. C. BEVINGTON

25

243-243

16A

246-6

7. C. BEVINGTON

25

243-243

16A

246-6

7. C. BEVINGTON

25

243-243

16A

246-6

7. C. BEVINGTON

25

243-243

16A

246-6

7. C. BEVINGTON

25

243-243

16A

246-6

7. C. BEVINGTON

25

243-243

16A

246-6

7. C. BEVINGTON

25

243-243

16A

246-6

7. C. BEVINGTON

25

243-243

16A

246-6

7. C. BEVINGTON

25

243-243

16A

246-6

7. C. BEVINGTON

25

243-243

16A

246-6

7. C. BEVINGTON

25

243-243

16A

246-6

7. C. BEVINGTON

25

243-243

16A

246-6

7. C. BEVINGTON

25

243-243

16A

246-6

7. C. BEVINGTON

25

243-243

16A

246-6

7. C. BEVINGTON

25

243-243

16A

246-6

7. C. BEVINGTON

25

243-243

16A

246-6

7. C. BEVINGTON

25

243-243

16A

246-6

7. C. BEVINGTON

25

243-243

16A

246-6

7. C. BEVINGTON

25

243-243

16A

246-6

7. C. BEVINGTON

25

243-243

16A

246-6

7. C. BEVINGTON

25

243-243

16A

246-6

7. C. BEVINGTON

25

243-243

16A

246-6

7. C. BEVINGTON

25

243-243

16A

246-6

7. C. BEVINGTON

25

243-243

16A

246-6

7. C. BEVINGTON

25

243-243

16A

246-6

7. C. BEVINGTON

25

243-243

16A

246-6

7. C. BEVINGTON

25

243-243

16A

246-6

7. C. BEVINGTON

25

243-243

16A

246-6

7. C. BEVINGTON

25

243-243

16A

246-6

7. C. BEVINGTON

25

243-243

16A

246-6

7. C. BEVINGTON

25

243-243

16A

246-6

7. C. BEVINGTON

25

243-243

16A

246-6

7. C. BEVINGTON

25

243-243

16A

246-6

7. C. BEVINGTON

25

CHAMPION TRACT BARBER TRACT

**MUNSON  
TWP - I  
NOT TO SCALE  
1968**

SCALE 1"=300'  
JAN. 1, 1968

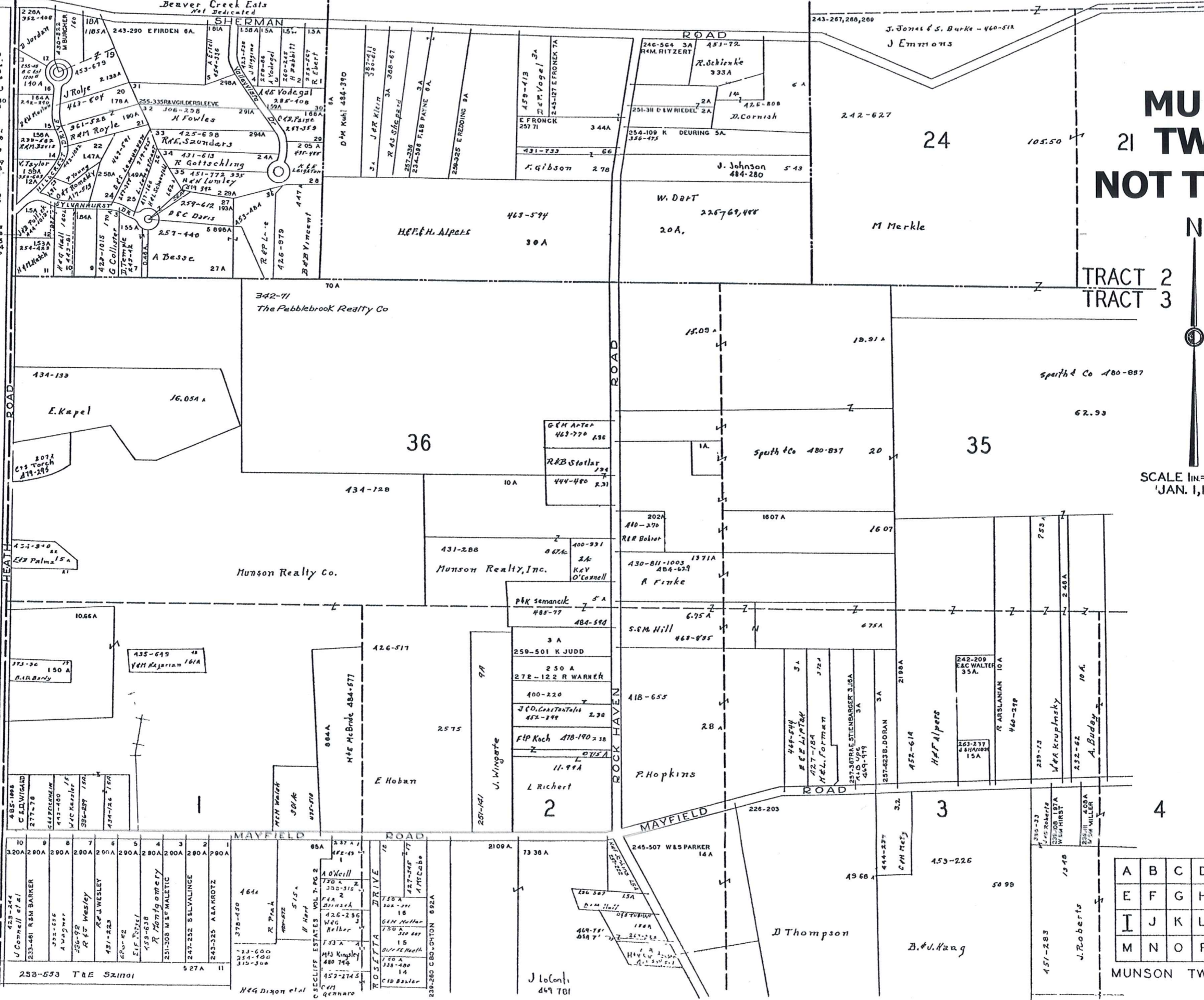


CHESTER TOWNSHIP



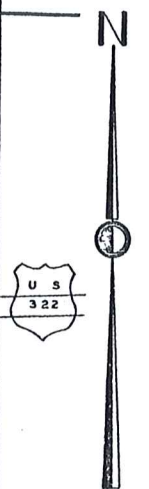
VOL. 4 - PG. 32 2 1/2 VALLEY VIEW ACRES

7 D TEMPLE 243-42  
 8 V HOUSE 403-370  
 9 T W Harris 375-8  
 10 L A Schmitt 254-224  
 11 W HATCH 254-423  
 12 D Gordon 352-408  
 13  
 14 R M DAVIS 232-603  
 15 R M MORTON 242-240  
 16 G J BISHOP 255-473  
 17 J Germano 353-11  
 18  
 19  
 20 L Nelson 291-501  
 21 R M Royce 361-530  
 22 S P Wholly 332-32  
 23 T R ALEX 417-113  
 24 L R LONGSTREET  
 25 L W COFFIELD 321-209  
 26 H A Sabeen 411-164  
 27 A W KROWARZ 257-330  
 28 A DAVIS 331-110  
 29 A BLESS 255-440  
 30 K E Leighton 435-485  
 31 R C D PAINE 257-359  
 32 R C VODERAL 351-018  
 33 R V GILBERT 257-337  
 34 J GOTTSCHEG 259-305  
 35 A ZEKANIS 253-374  
 36 R F SANDERS 277-80



1) D & N Nelson 254-512 lot 34  
 2) Munson Fire 255-503 lot 34

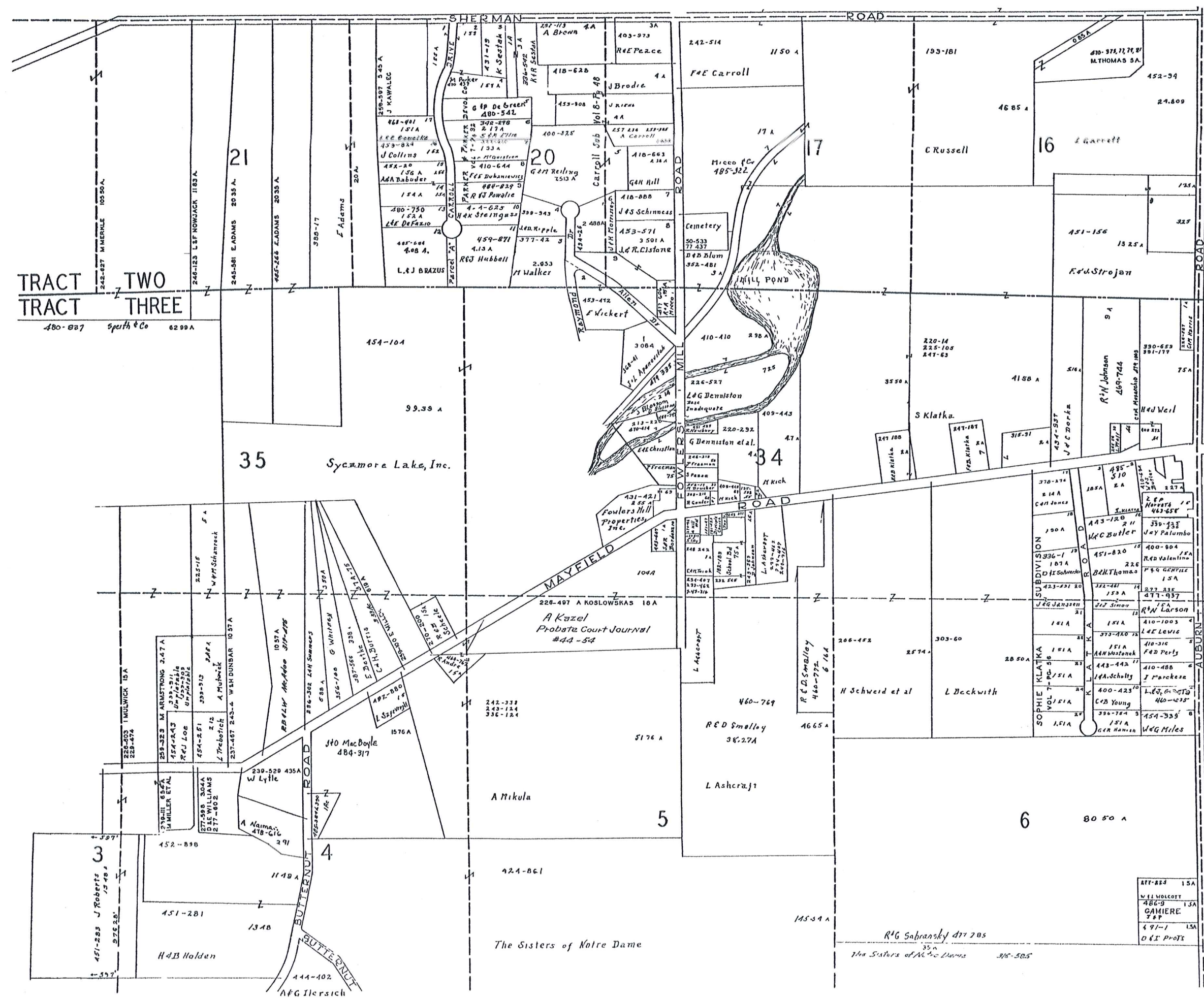
# MUNSON TWP - J NOT TO SCALE 1968



SCALE 1"=300'  
 JAN. 1, 1968

A	B	C	D
E	F	G	H
I	J	K	L
M	N	O	P

MUNSON TWP.



TRACT TWO  
 TRACT THREE  
 180-827 Speith & Co 62 99 A

ATTY-883 1.5A  
 W & L VOLCOTT  
 484-3 1.5A  
 GAMIERE  
 7 8 P  
 4 91-1 1.5A  
 O & I PROTS

R & G Sabransky 477 205  
 30 A  
 The Sisters of M. the Lovers 305-505

H & B Holden  
 451-281  
 13 AB

The Sisters of Notre Dame  
 424-861

ARMSTRONGS 3.47 A  
 154-243  
 R & J LOE  
 454-251  
 L Trebotich  
 237-487 243-A W & H DUNBAR 10 37 A

225-15  
 W & P Schreck  
 228-403 1 MILLWICK 15 A  
 228-474

454-104  
 99.39 A  
 Sycamore Lake, Inc.

245-581 E ADAMS 20 35 A  
 465-268 E ADAMS 20 35 A  
 388-17  
 F Adams  
 20 A

SHERMAN ROAD

21

20

17

16

35

34

3

4

5

6

5

4

3

2

1

1

1

1

1

1

1

1

1

1

1

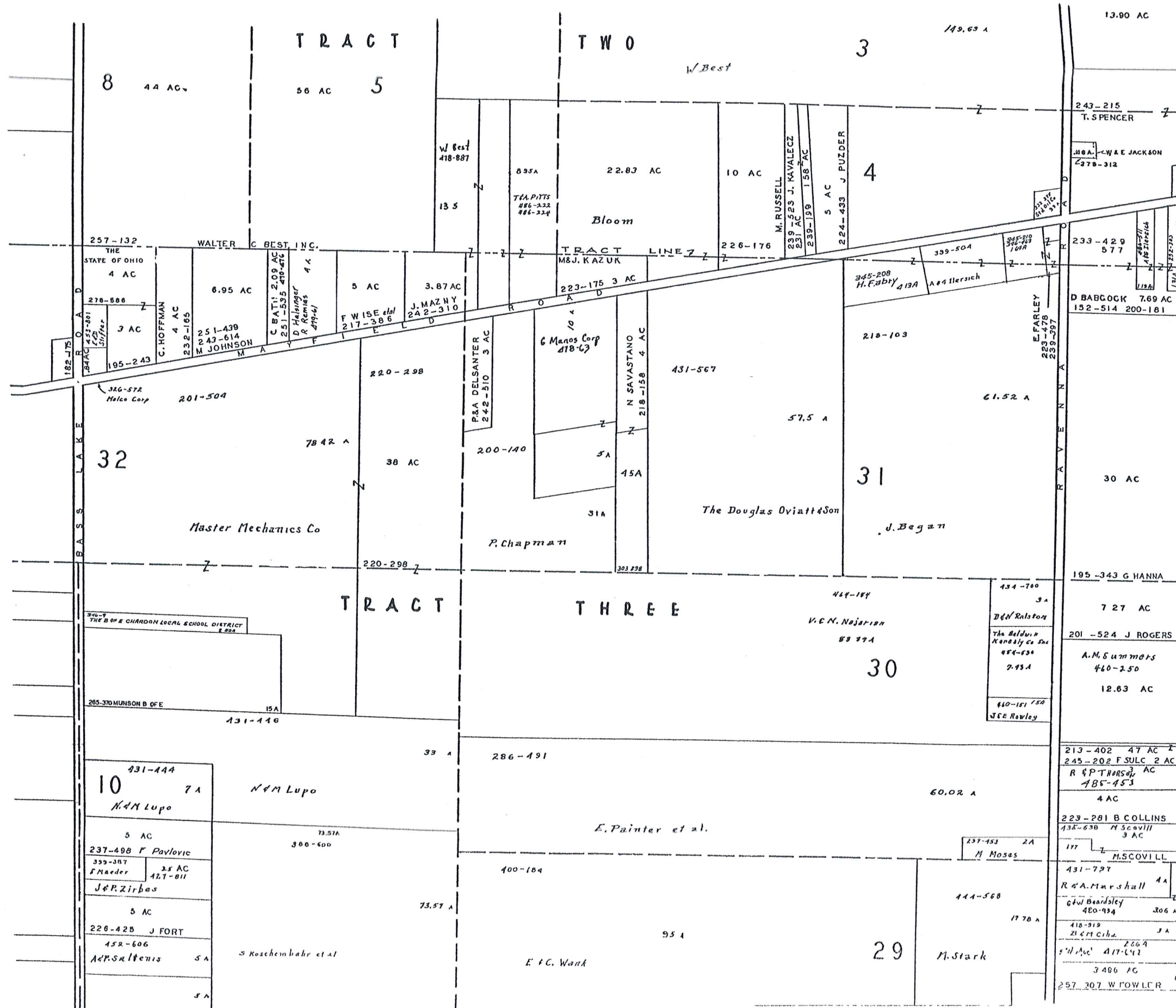
1

1

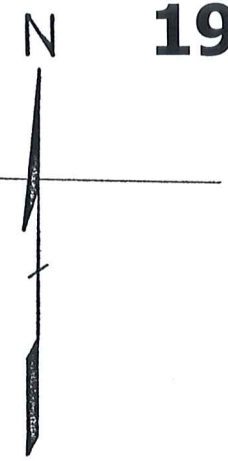
1



260-326



**MUNSON  
TWP - L  
NOT TO SCALE  
1968**



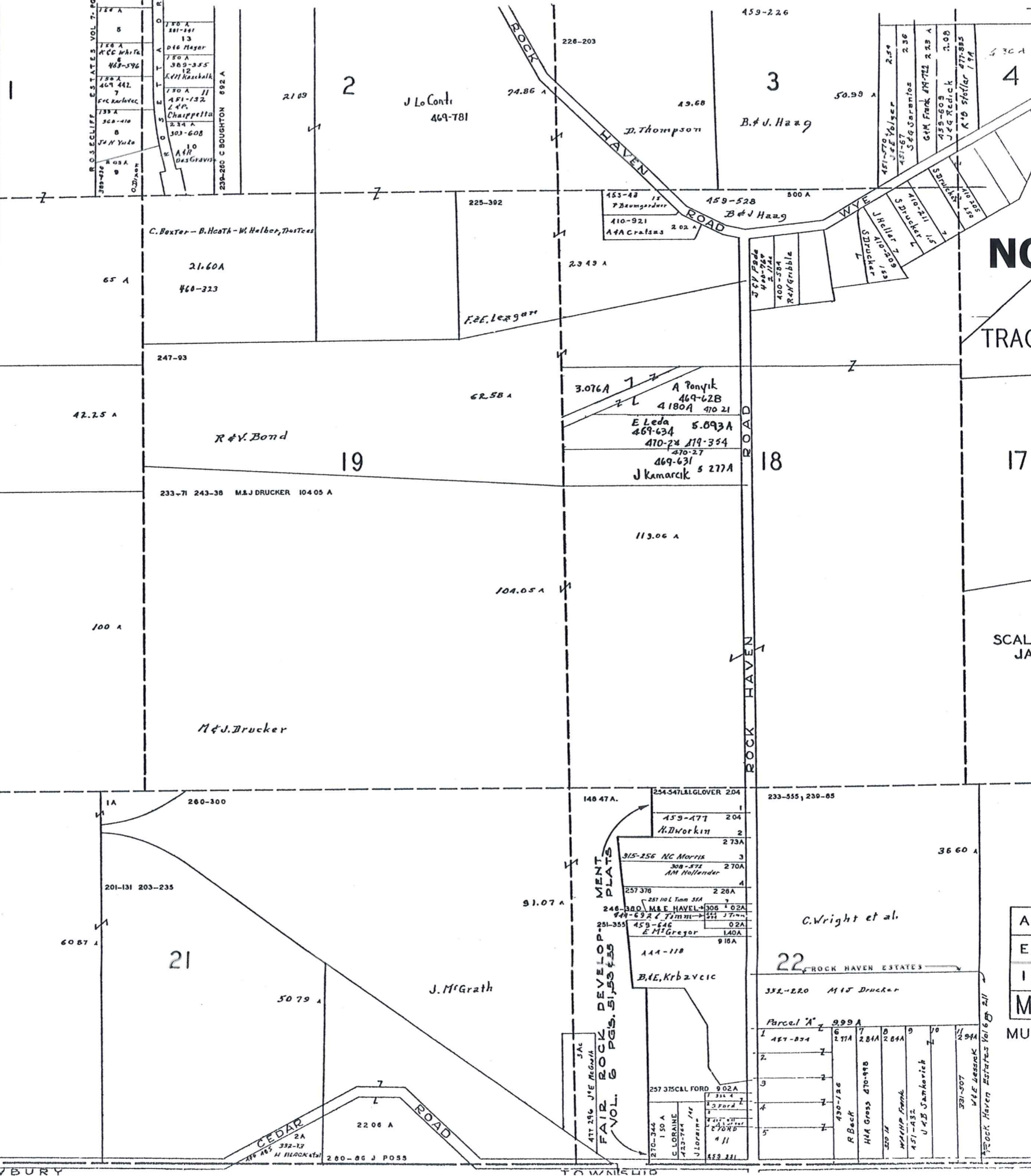
A	B	C	D
E	F	G	H
I	J	K	L
M	N	O	P

SCALE 1" = 300 FT.

MUNSON TWP.  
JAN 1 1968

CHESTER TOWNSHIP VALLEY VIEW ACRES

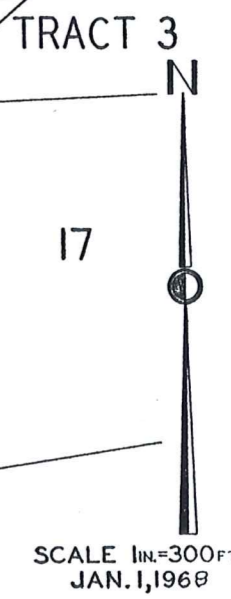
527A	12
527A	13
527A	14
527A	15
527A	16
527A	17
527A	18
527A	19
527A	20
527A	21
527A	22



# MUNSON TWP - M

## NOT TO SCALE

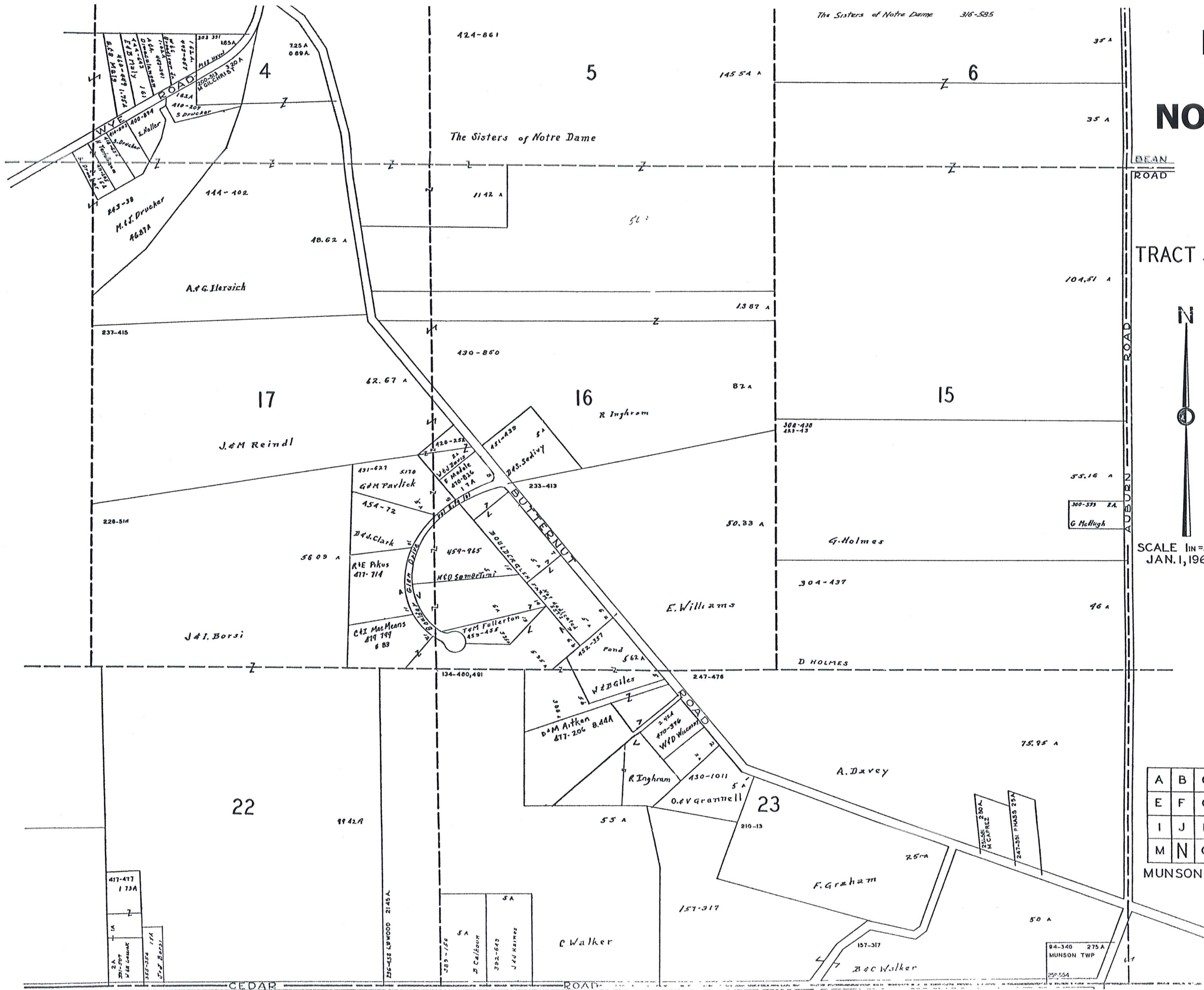
### 1968



A	B	C	D
E	F	G	H
I	J	K	L
M	N	O	P

MUNSON TWP.

# MUNSON TWP - N NOT TO SCALE 1968



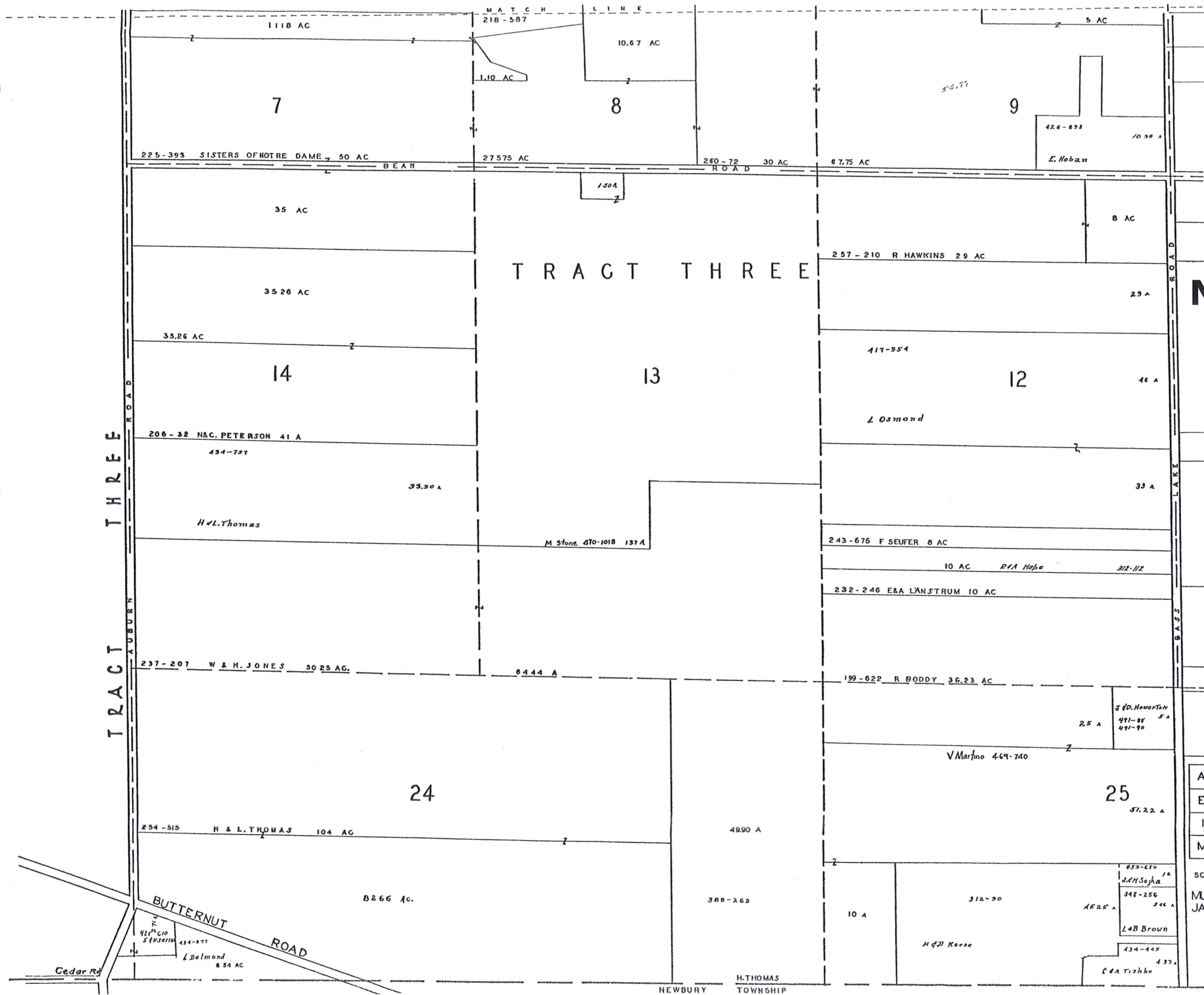
TRACT 3



SCALE 1in=300ft.  
JAN. 1, 1968

A	B	C	D
E	F	G	H
I	J	K	L
M	N	O	P

MUNSON TWP.



**MUNSON  
TWP - O  
NOT TO SCALE  
1968**



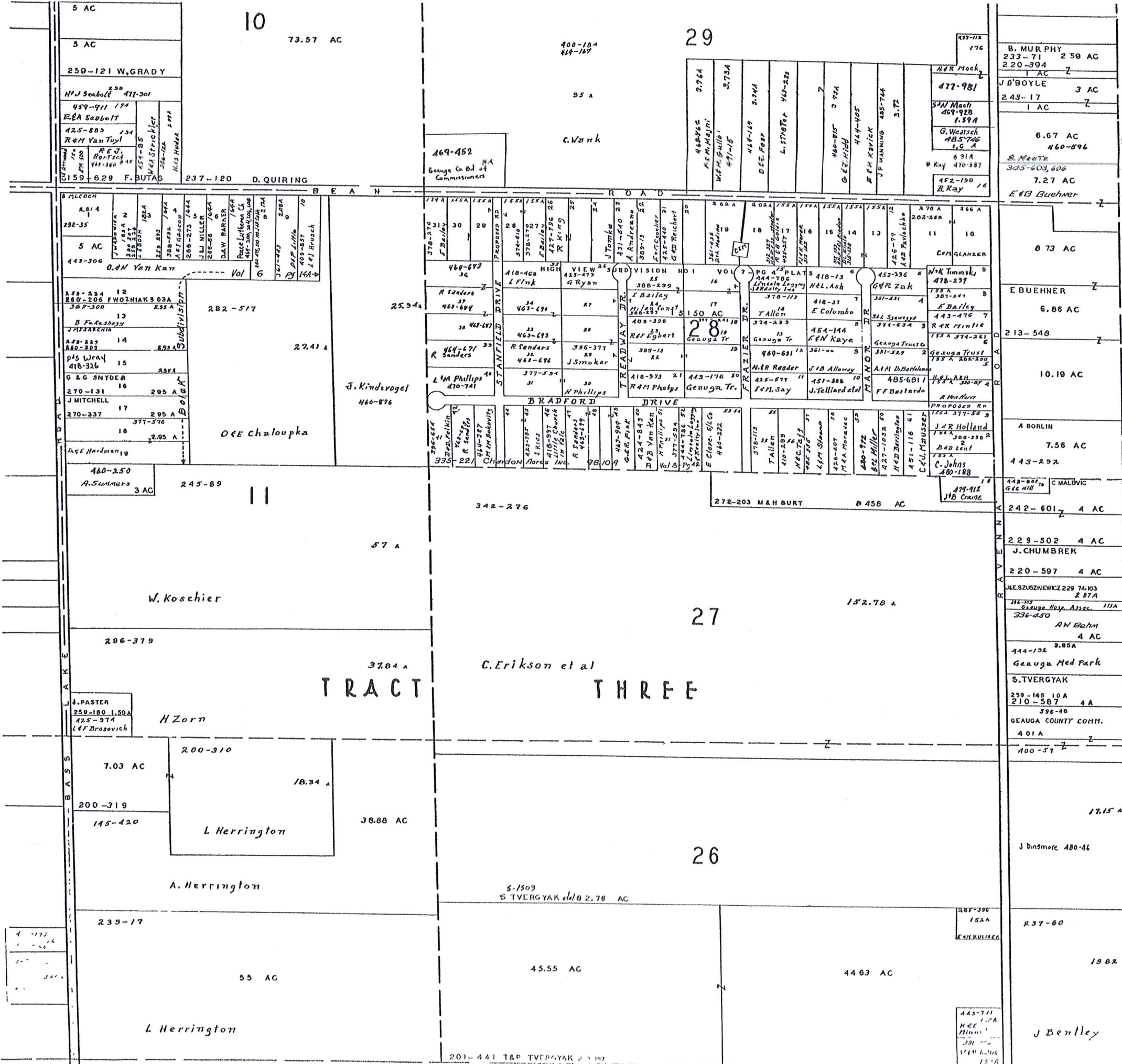
A	B	C	D
E	F	G	H
I	J	K	L
M	N	O	P

SCALE 1"=300 FT  
MUNSON TWP  
JAN 1 1968

9

10

29



**MUNSON  
TWP - P  
NOT TO SCALE  
1968**



A	B	C	D
E	F	G	H
I	J	K	L
M	N	O	P

SCALE 1"=300 FT

MUNSON TWP.  
JAN 1968

12

25

CLARIDON TOWNSHIP

TRACT

THREE

201-441 T&P TVERGYAK 2.70 AC

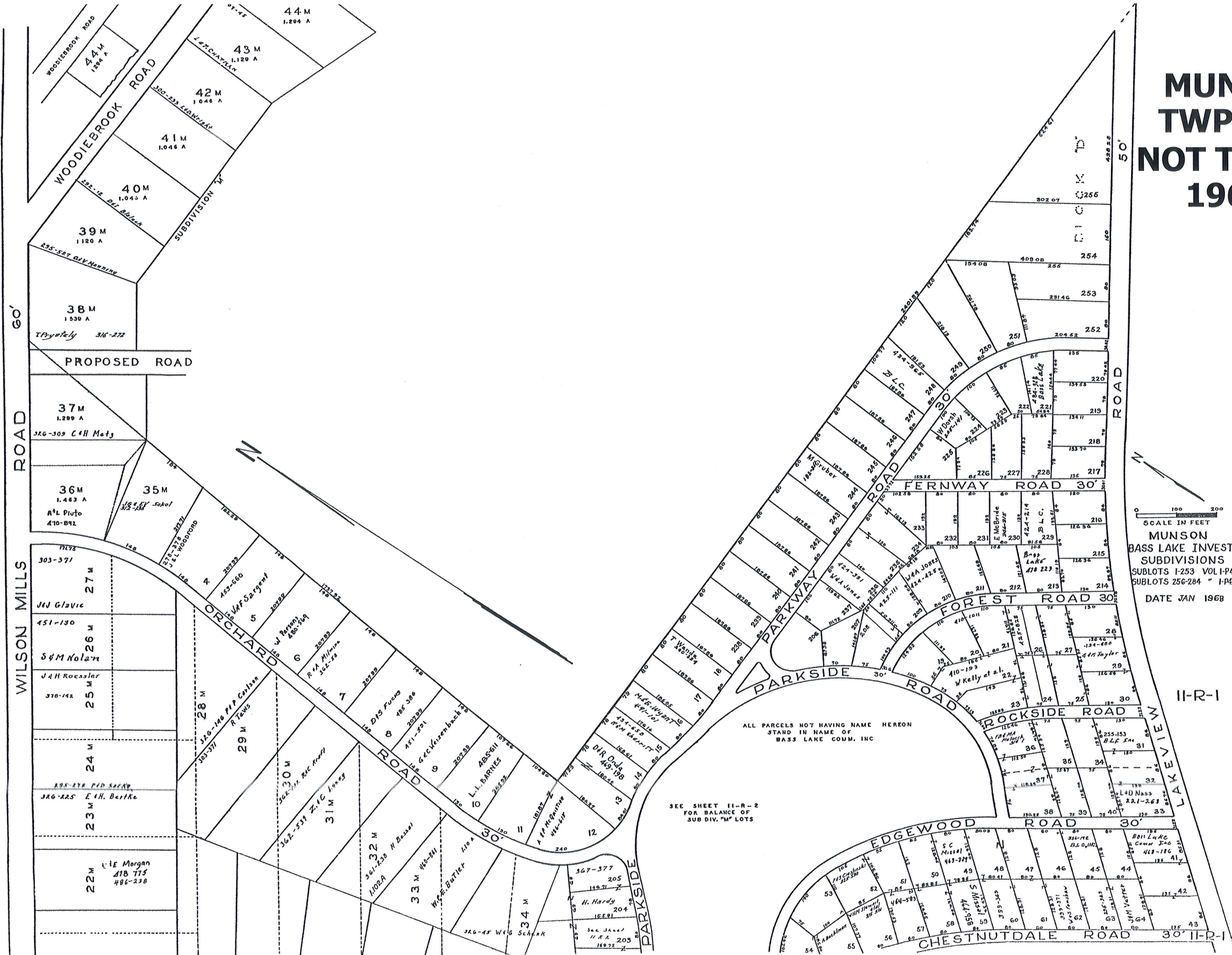
443-771  
K&E  
Hunt  
331  
144  
15.8

# MUNSON TWP - R1 NOT TO SCALE 1968

SCALE IN FEET  
0 100 200

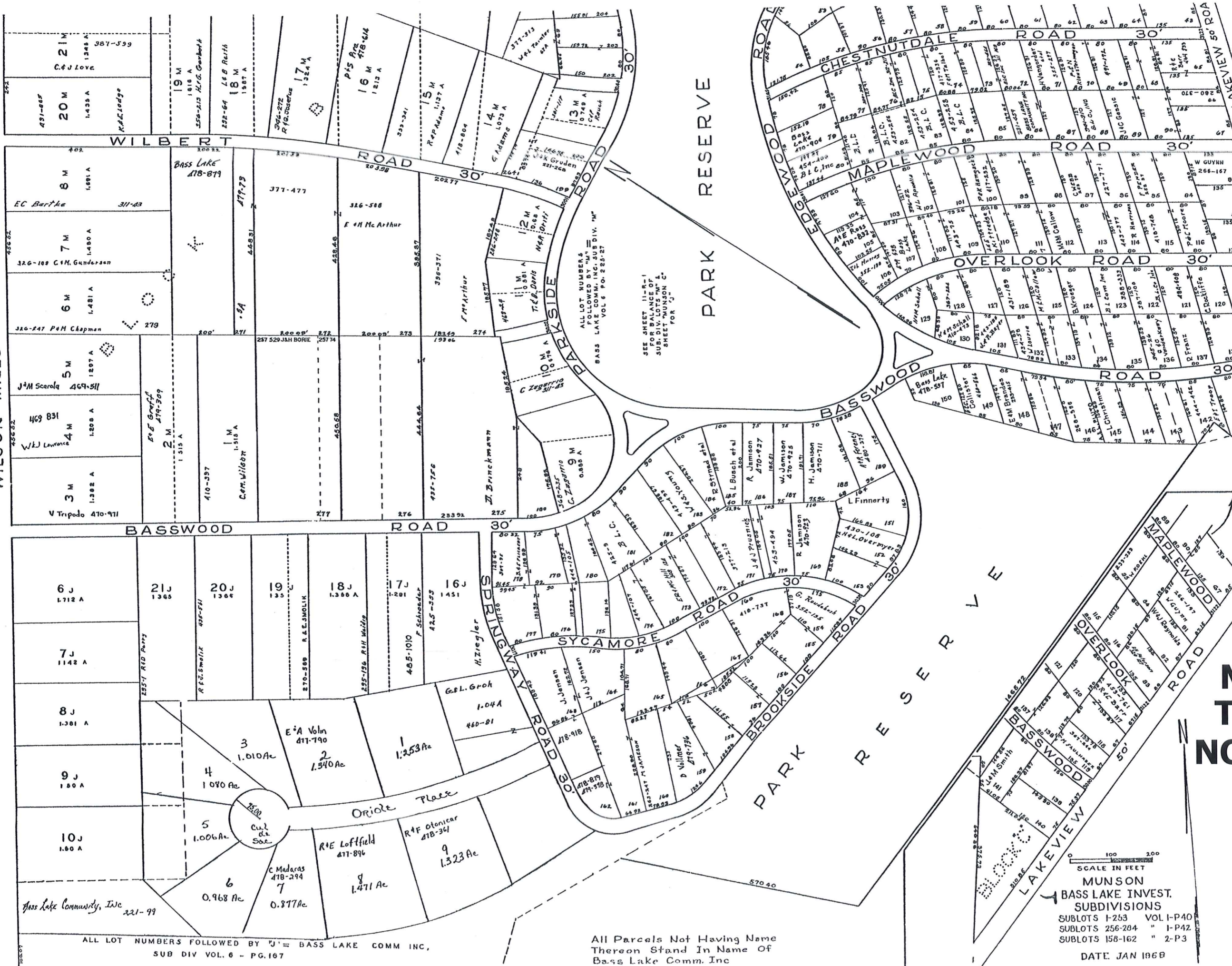
MUNSON  
BASS LAKE INVEST.  
SUBDIVISIONS  
SUBLOTS 1-253 VOL. I-P40  
SUBLOTS 256-284 " I-P42  
DATE JAN 1968

11-R-1



WILSON MILLS ROAD

60'



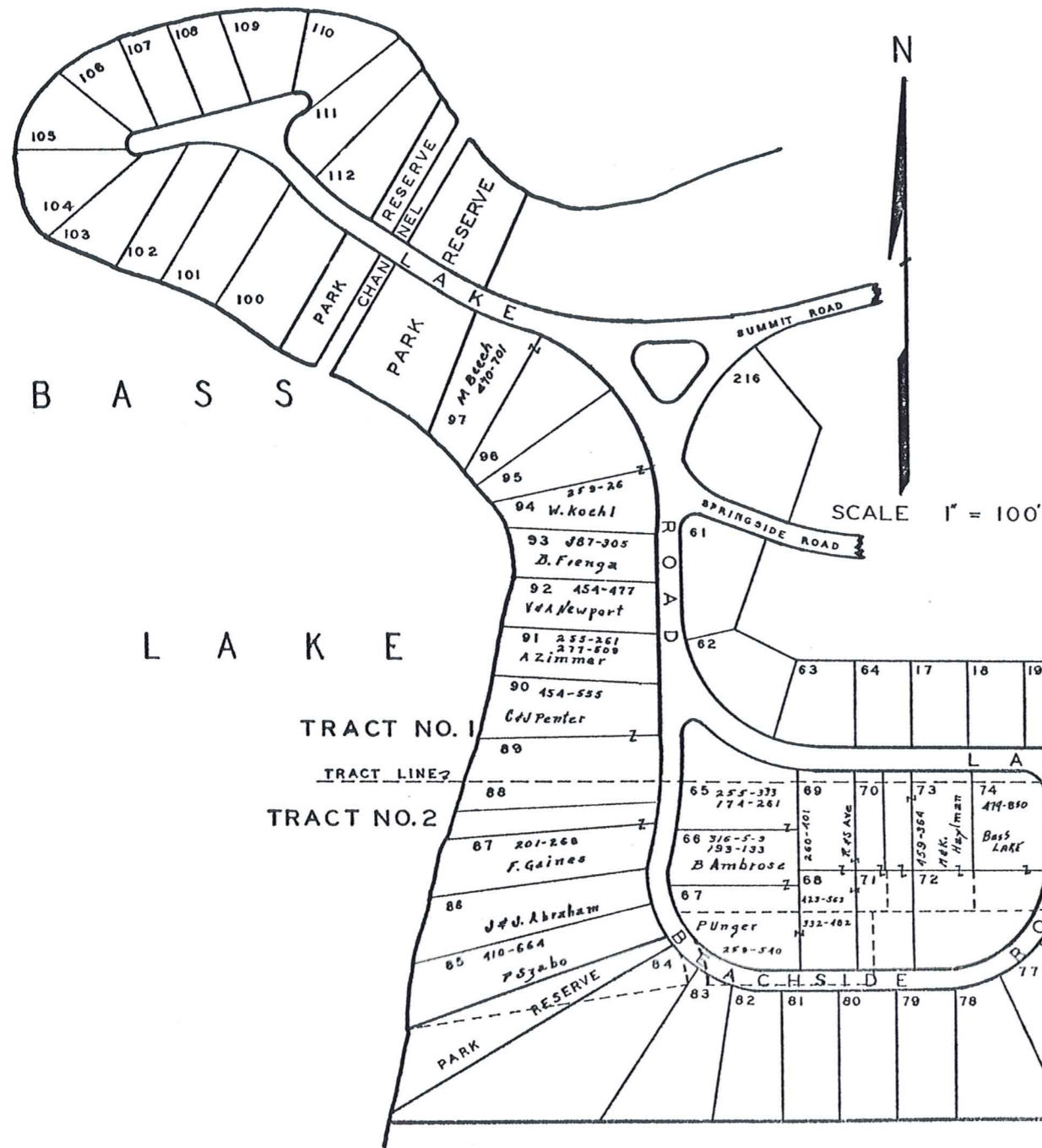
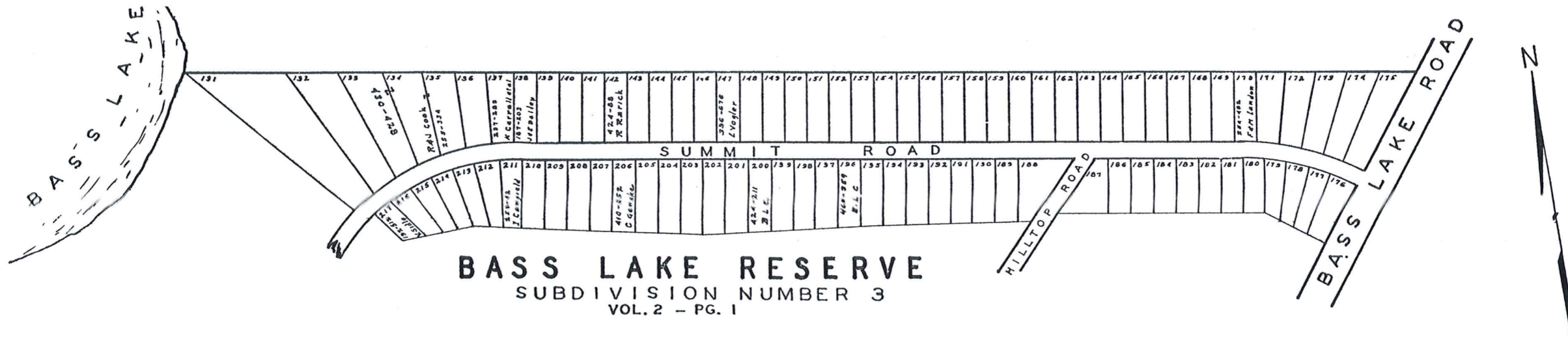
**MUNSON  
TWP - R2  
NOT TO SCALE  
1968**

SCALE IN FEET  
0 100 200  
MUNSON  
BASS LAKE INVEST.  
SUBDIVISIONS  
SUBLOTS 1-253 VOL. I-P40  
SUBLOTS 256-204 " I-P42  
SUBLOTS 158-162 " 2-P3  
DATE JAN 1968

ALL LOT NUMBERS FOLLOWED BY 'J' = BASS LAKE COMM INC,  
SUB DIV VOL. 6 - PG. 167

All Parcels Not Having Name  
Thereon Stand In Name Of  
Bass Lake Comm. Inc





**MUNSON  
TWP - T  
NOT TO SCALE  
1968**

